



Northumberland  
County Council

# Northumberland Local Plan

Date (09/07/2018)

[www.northumberland.gov.uk](http://www.northumberland.gov.uk)

# Content of Presentation

Presentation will cover:

- Progress to date on preparation of Northumberland Local Plan
- Regulation 18 Local Plan Consultation
- Next Steps

# Northumberland Local Plan - Progress to Date

- Preparing new Local Plan
- Number of updates to existing evidence base studies
- Call for sites undertaken
- Draft Sustainability Appraisal Scoping Report undertaken
- Working with internal and external partners on evidence base studies and draft policies
- Working Group reviewing and inputting into development of draft policies
- Working with Neighbourhood Plan Groups
- Spring 2018 Local Plan consultation
- Threat of Government Intervention

# Regulation 18 Local Plan

- New plan will be a Local Plan with full plan coverage
- Plan period will be 2016-2036
- The Local Plan will:
  - Set the strategic planning policies of the Council
  - Set the general scale and distribution of new development to 2036
  - Provide the planning principles, including detailed 'development management' policies to guide planning decisions
  - Show in detail where new homes, workplaces and facilities will be located through allocations of land
  - Show key environmental designations and include site specific proposals for the conservation and enhancement of historic and natural assets
  - Cover the whole of Northumberland (except the National Park)
  - Replace all local plans and core strategies
  - Run alongside recent and new Neighbourhood Plans

# Regulation 18 Local Plan - Vision

- Plan contains a draft vision:

Northumberland's physical and cultural identity will be conserved and nurtured; its resources will be utilised in a sustainable way. The breadth, scale and quality of its special, varied landscapes and biodiversity will be conserved, enhanced and increased. The quality of its buildings and spaces will be conserved and improved. New development will be well designed, minimise environmental harm and reduce the effects of climate change.

The economy will be thriving and competitive, and deliver more and better jobs. Supported by investment and infrastructure, building on existing strengths whilst diversifying and realising the potential of the rural and visitor economy .

The health and wellbeing of the county's people and communities will be safeguarded by continually improving education and skills, and ensuring access to decent, affordable homes, services and facilities is secured.

# Regulation 18 Local Plan - Objectives

- The objectives are:
  - Growing and diversifying the Northumberland economy
  - Extending housing choice
  - Conserving and enhancing the environment and environmental assets
  - Improving connectivity and movement
  - Supporting healthy, sustainable communities by responding to service needs
  - Mitigating and adapting to the effects of climate change
  - The prudent use of natural resources
  - Ensuring high quality design of buildings and spaces

# Regulation 18 Local Plan - Delivering the Vision

- Plan needs to define level and distribution of development and include specific policies to deliver the vision
- Ambitious growth scenario for employment - aligned with the SEP, North of Tyne and Borderlands Initiative
- Plan includes a spatial guide to location of development:
  - Main Towns main focus for development
  - Service Centres will accommodate development that maintains and strengthens their roles
  - Smaller scale development in other Service Villages and cluster of smaller settlements
- Use of settlement boundaries
- No Green Belt deletions proposed other than for employment
- Policies on Climate Change Mitigation and Adaptations, Health and Wellbeing and Design

# Regulation 18 Local Plan - Economic Development

- The Strategy for the economy:
  - Aims to deliver up 15,000 new jobs
  - Development proposals will
    - Seek to deliver sufficient employment land and premises - 206 hectares of employment land - right range and quality in the right locations
    - Green Belt deletions for employment land proposed at Hexham, Ponteland and Prudhoe
    - Support town centres as a location for employment and business
    - Support rural enterprise
    - Support and promote tourism and the visitor economy
    - Facilitate training and upskilling of the workforce
    - Policy on hot food takeaways



# Regulation 18 Local Plan - Housing

- Plan proposes to make best use of existing housing stock
- Housing requirement of 17,700 dwellings (average of 885 per annum)
- Indicative distribution of housing requirements for Main Towns, Service Centres and rest of delivery areas
- Significant number of housing schemes in the pipeline, therefore no need to allocate large number of new housing sites
- Housing site allocations in Newbiggin, Seghill, Seaton Delaval, Hexham, Prudhoe, Riding Mill, Berwick, Seahouses, Norham, Haltwhistle, Haydon Bridge, Bellingham, Wark, and West Woodburn - No Green Belt deletions
- Housing type and mix - SHMA
- Issue of second homes and need for primary occupancy recognised
- Minimum 20% affordable housing contribution - 50:50 split rent /home ownership products
- Policies to meet the needs of older and more vulnerable people

# Regulation 18 Local Plan - Connectivity

- The Plan supports
  - Re-opening of Northumberland Railway Line (Ashington, Blyth and Tyne line)
  - Safeguards rail facilities
  - Improvements to key routes - A1 and A69
  - Role of Newcastle Airport
  - Harbours and Ports
- The Plan continues to plan for full coverage of wireless telecommunications and enhancement of broadband infrastructure

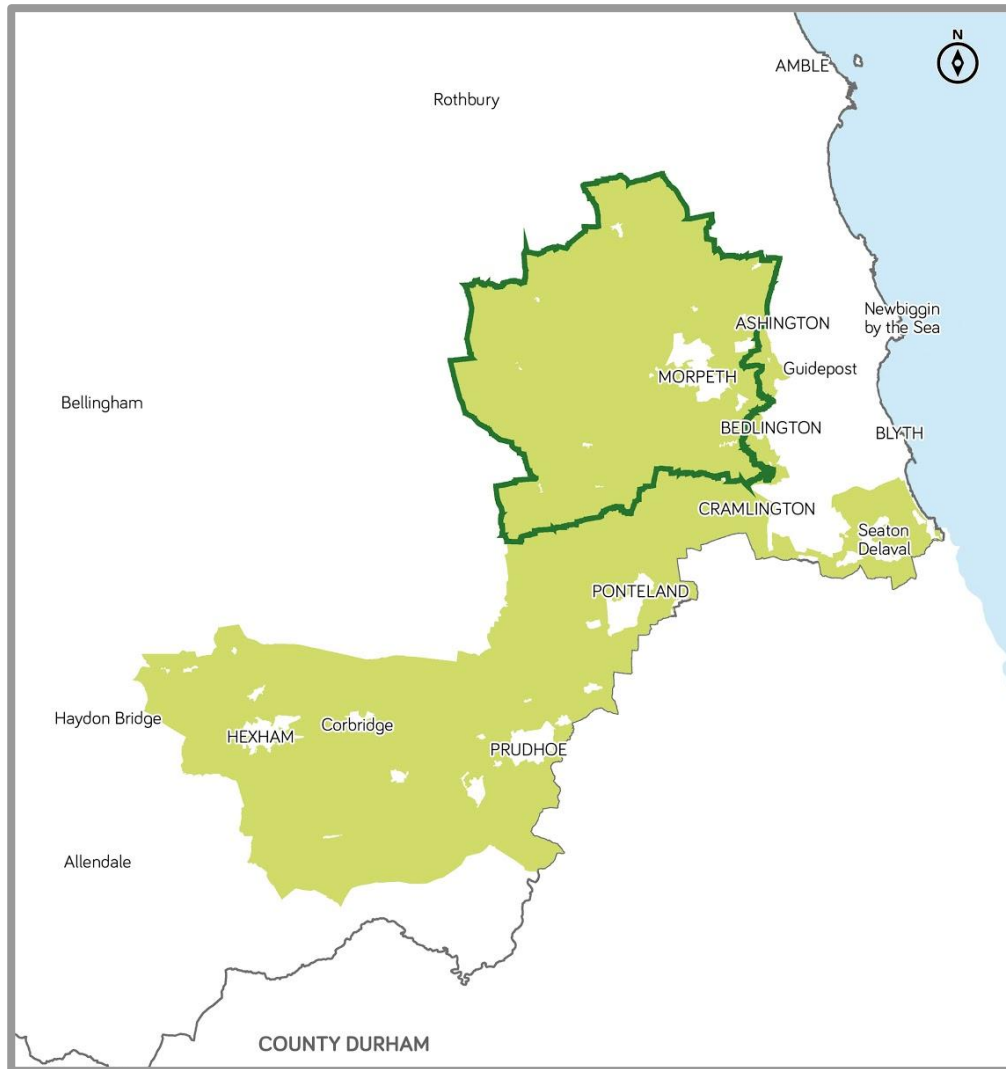
# Regulation 18 Local Plan - Other policy areas

Other policy areas include:

- Managing Natural Resources:
  - The Plan includes policies on minerals, waste and renewable energy
  - Preferred areas for sand and gravel and crushed rock extraction are identified
  - Safeguarding of existing waste management facilities are proposed
  - Suitable areas for wind turbine development identified
  - Policy on sustainable design and construction
- Natural and built environment
- Water environment
- Contaminated and unstable land, pollution and soil quality
- Infrastructure provision

# Settlement Specific Policies

# Green Belt Extension around Morpeth



Detailed boundaries defined for:

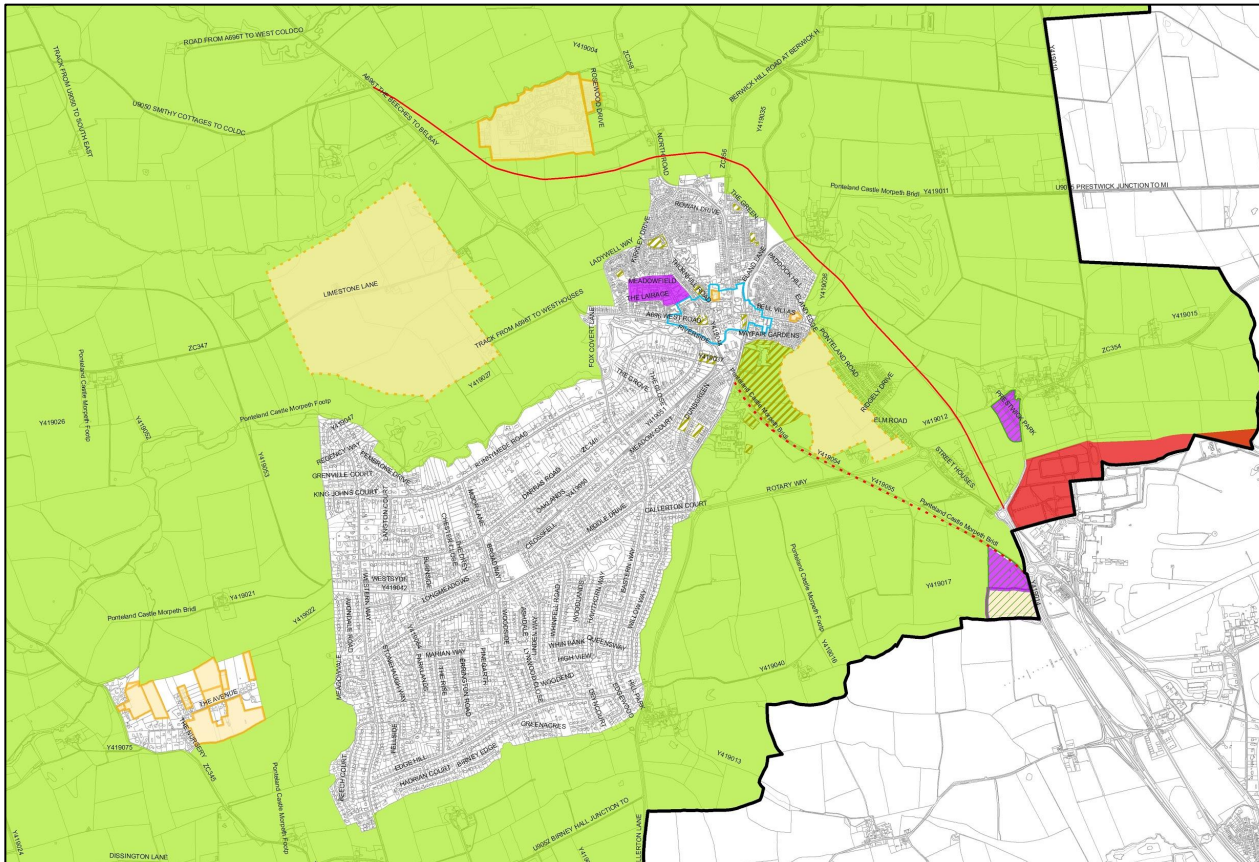
- Belsay
- Hartburn
- Hebron
- Hepscott
- Ogle
- Longhirst
- Longhorsley
- Miford
- Morpeth
- Pegswood
- Netherwitton
- Stannington
- Stannington Station
- Ulgham
- Whalton

# Main Town - Morpeth



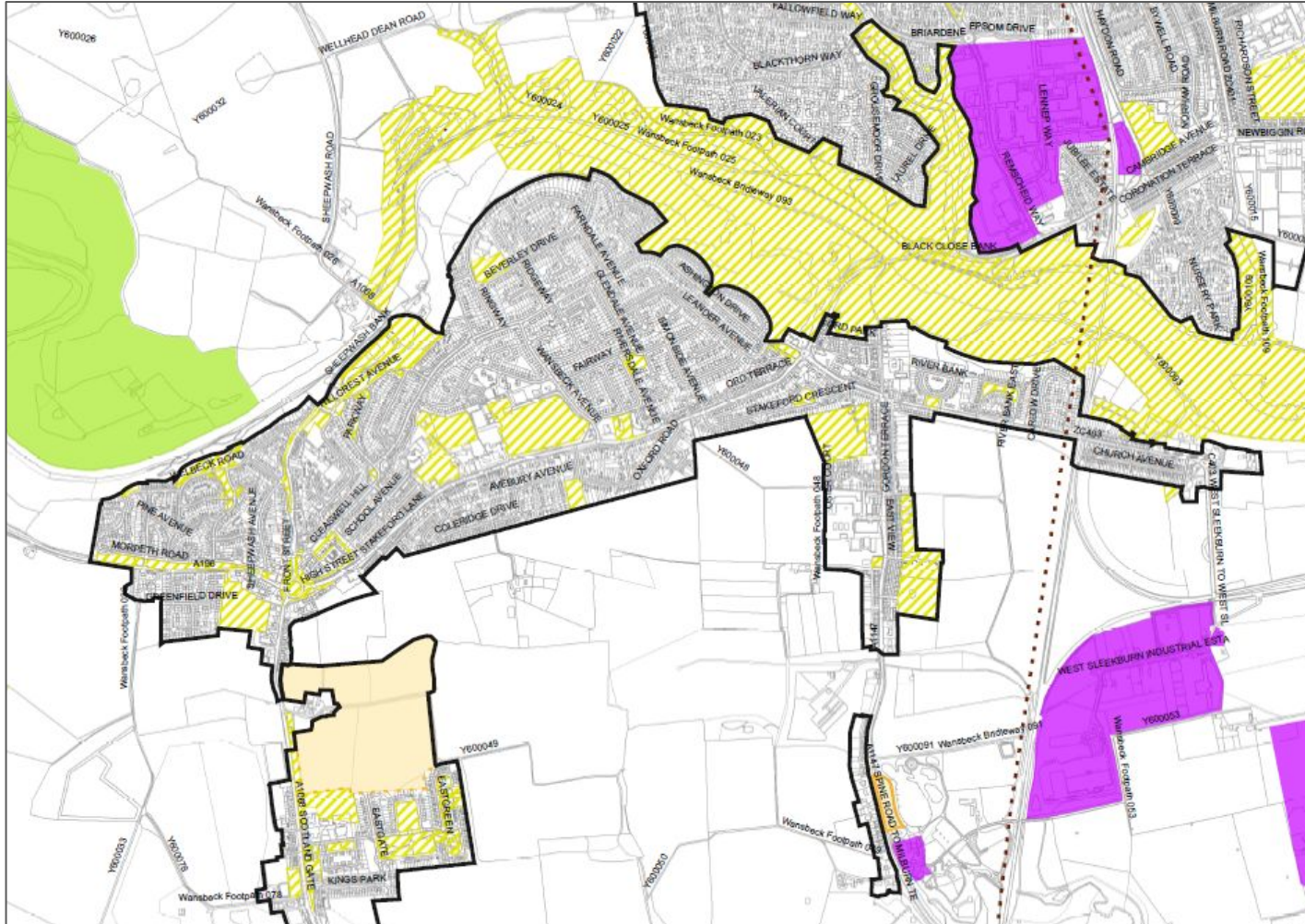
- Identified as a Main Town
- Main focus for employment, housing, retails and services
- Green Belt inset boundary proposed
- Made Neighbourhood Plan - settlement boundary, employment and housing allocations etc
- 1,700 houses (85pa)
- 4.5ha of employment land safeguarded south of Coopie Lane

# Main Town - Ponteland



- Identified as a Main Town
- Main focus for employment, housing, retails and services within GB constraints
- Green Belt inset boundary proposed
- Made Neighbourhood Plan
- 530 houses (27pa)
- No new housing allocations proposed
- GB deletions for employment proposed
  - 2ha at Prestwick Park
  - 3ha at Prestwick Pit
- 4ha of employment land safeguarded at Prestwick Pit
- Ponteland Bypass - land safeguarded

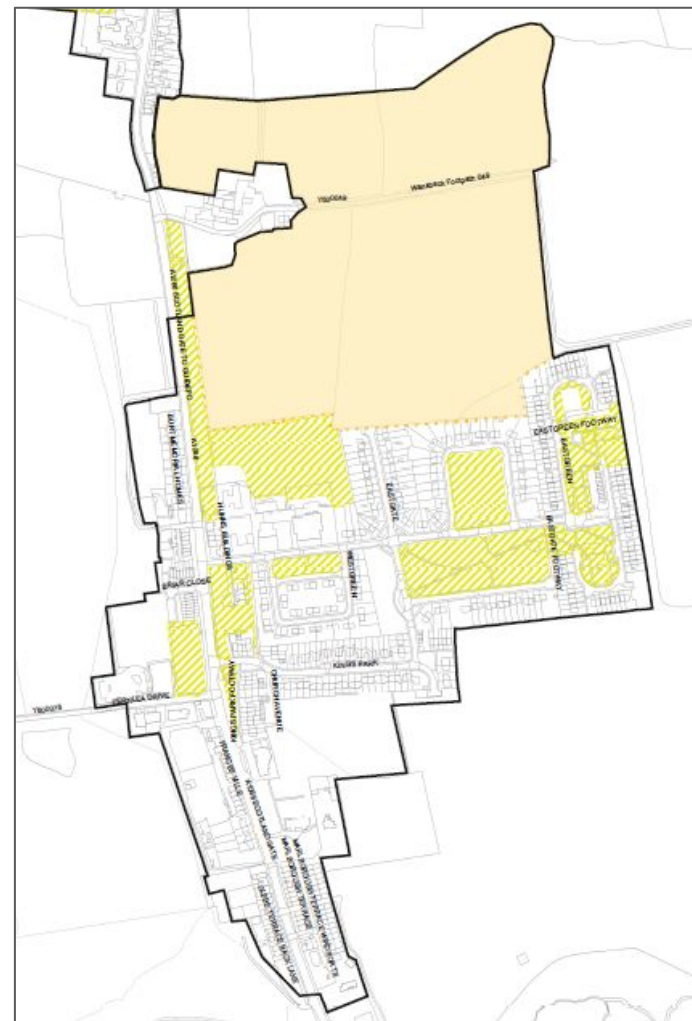
# Service Centre - Guidepost/Stakeford



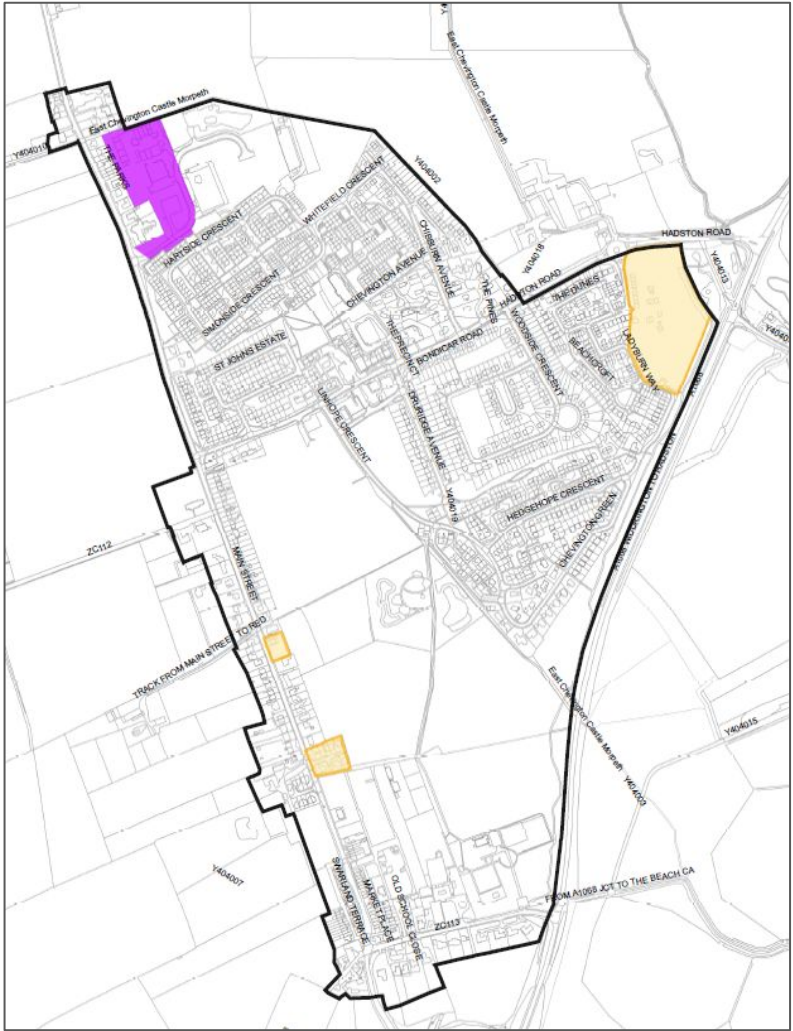
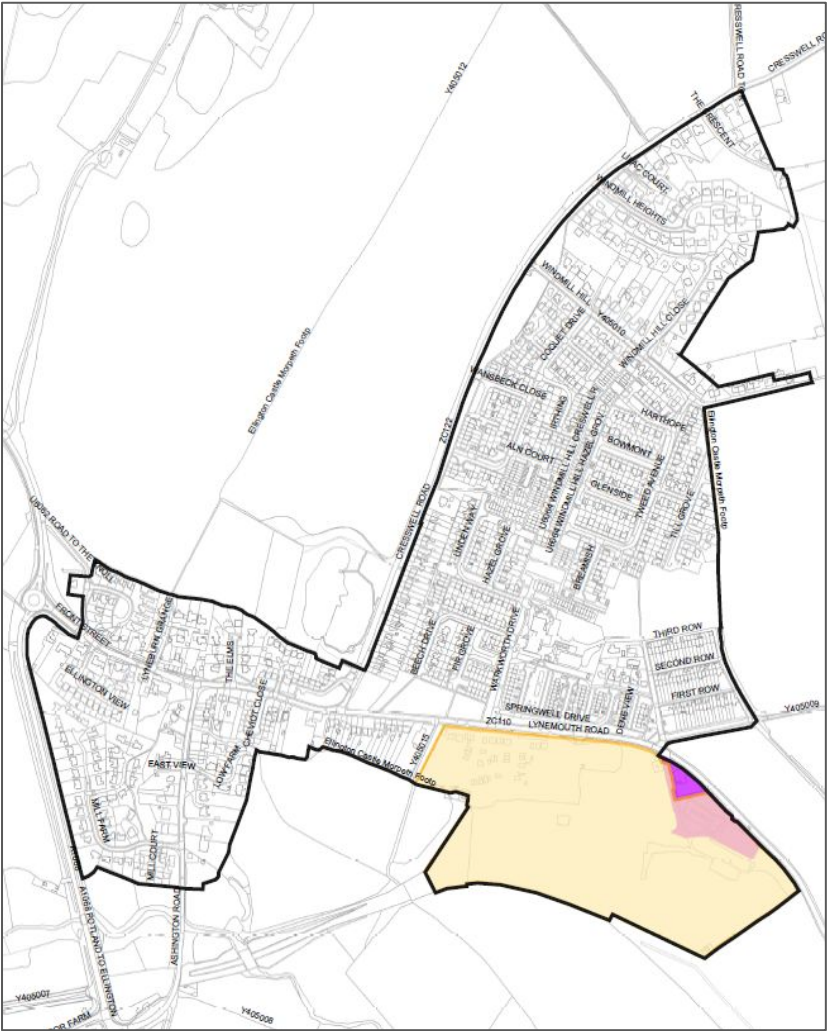
- Identified as a Service Centre
- Will accommodate development that maintains and strengthens its role
- Settlement boundary proposed
- No new employment land allocated
- 340 houses (17pa)
- No new housing allocations proposed
- Protected open space proposed



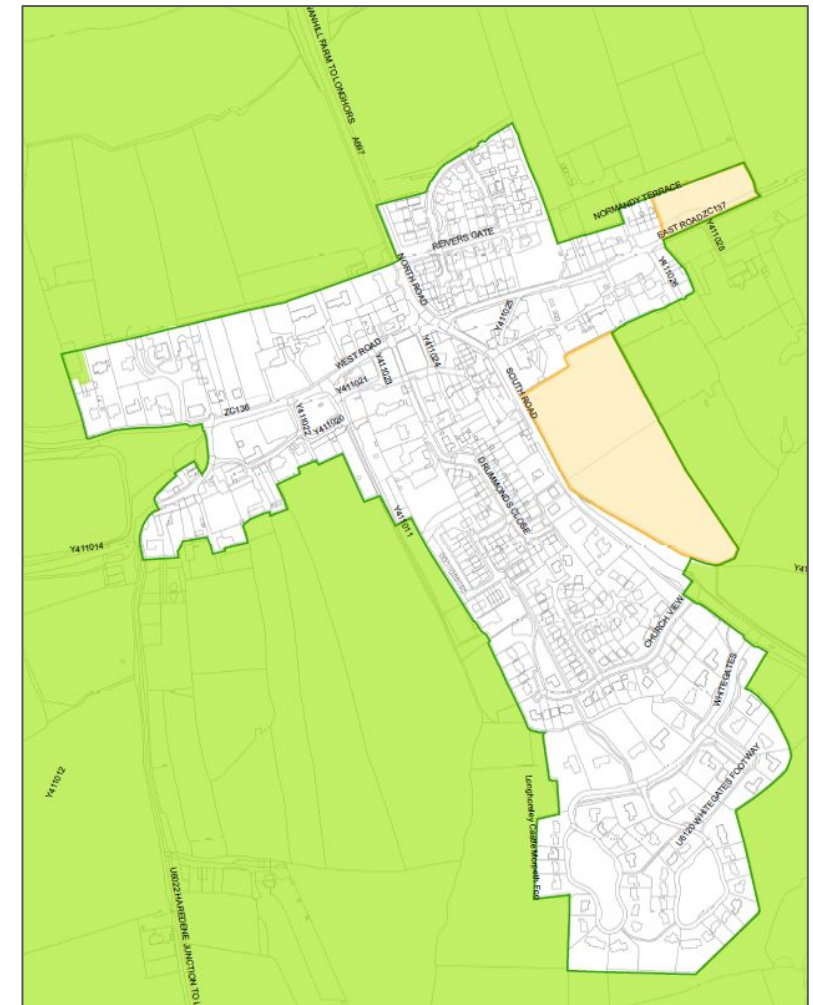
# Service Villages - Broomhill/Togston & Choppingington



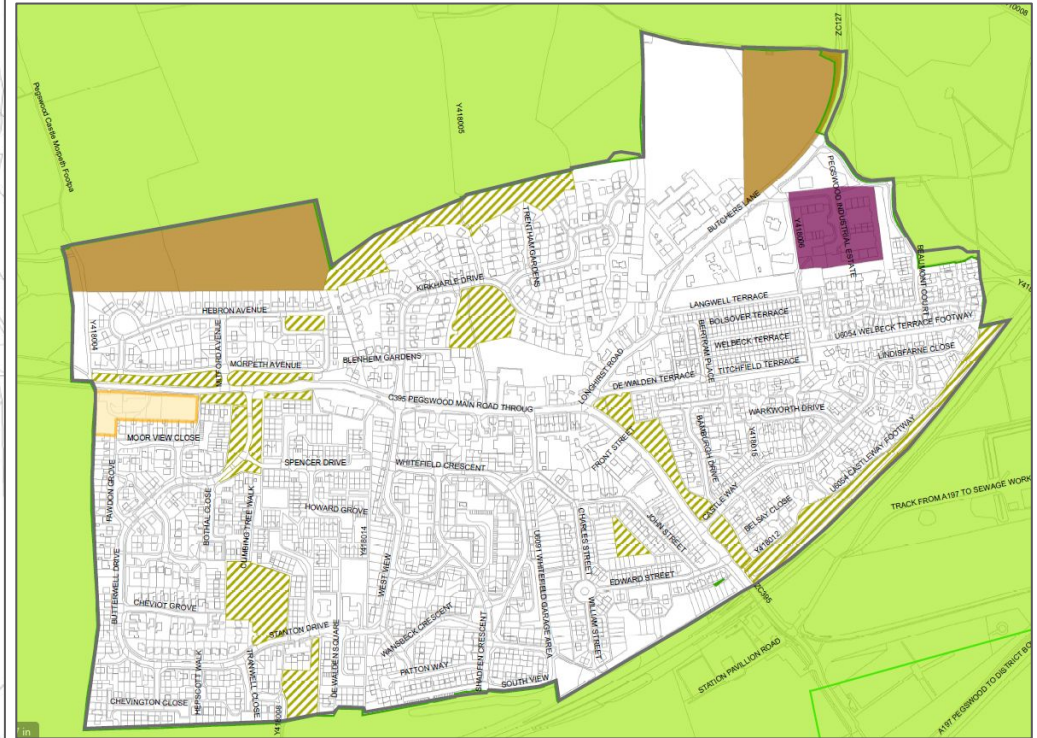
# Service Villages - Ellington & Hadston/S. Broomhill/Red Row



# Service Villages - Heddon-on-the Wall & Longhorsley



# Service Villages - Lynemouth & Pegswood



# Service Villages - Stamfordham & Stannington

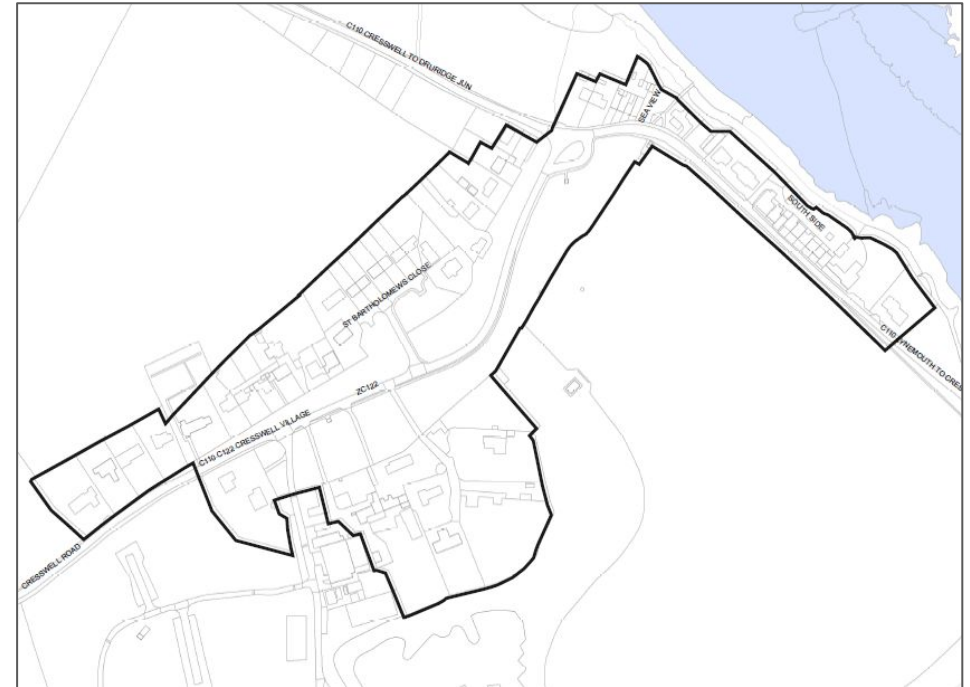
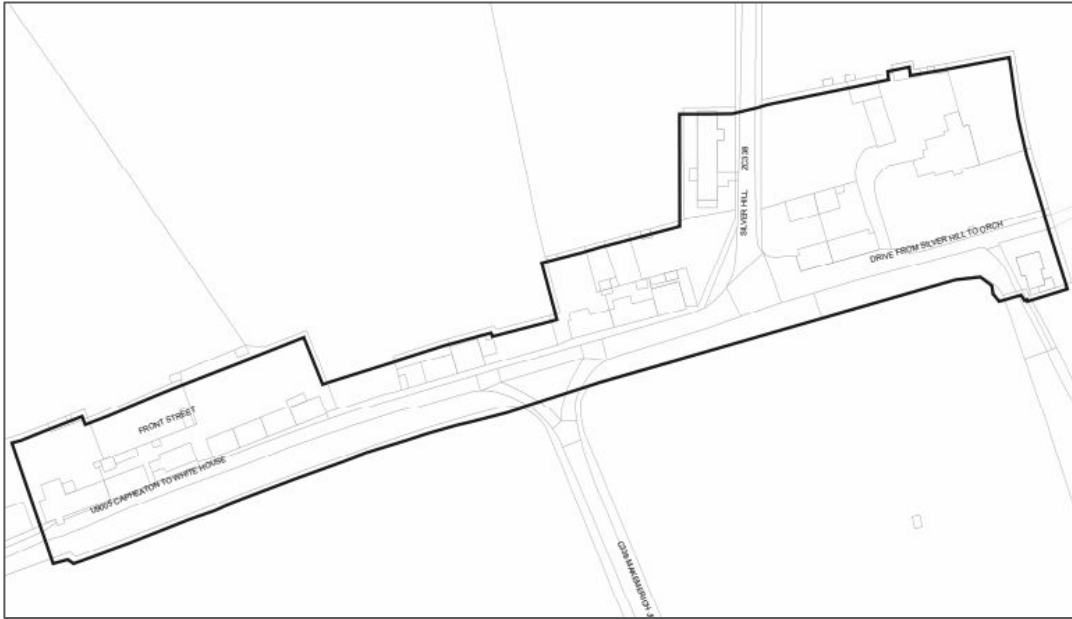


# Service Villages - Widdrington Station



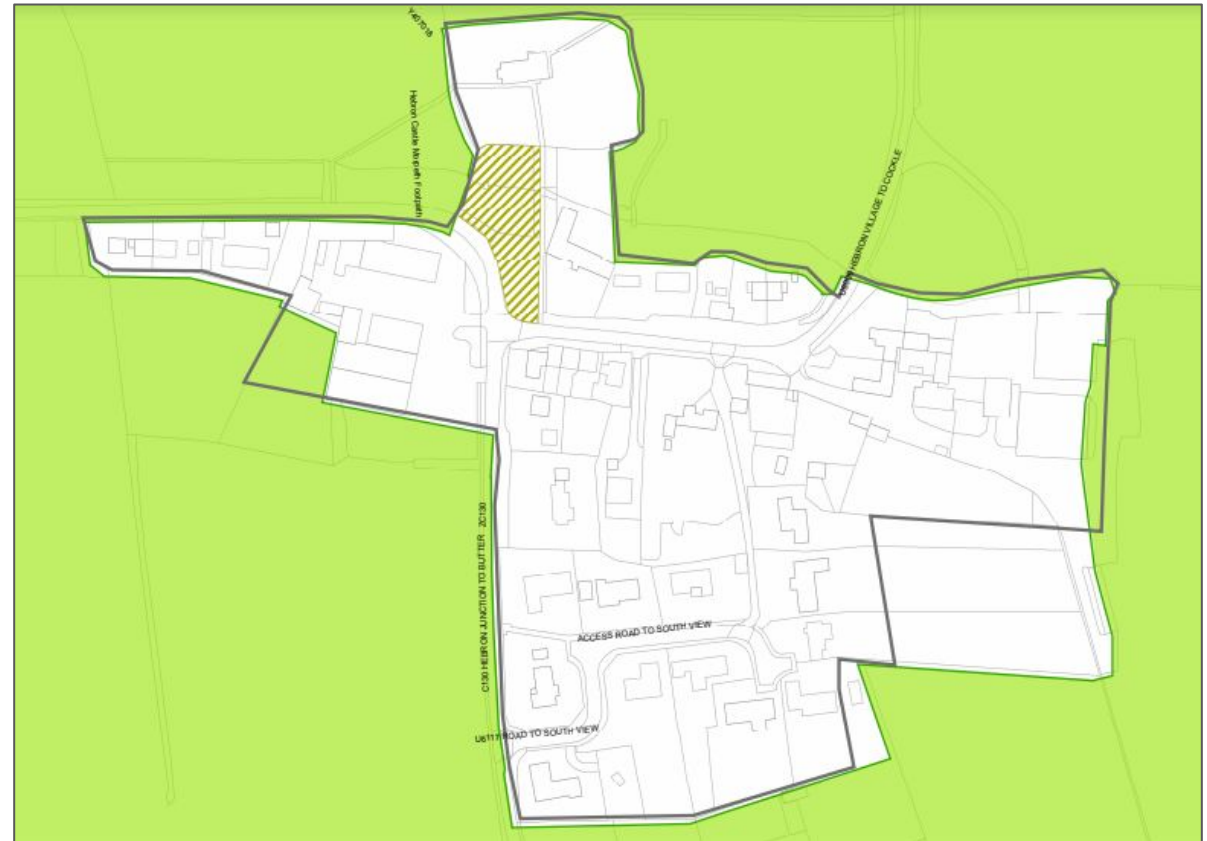


# Smaller Settlements - Capheaton & Cresswell

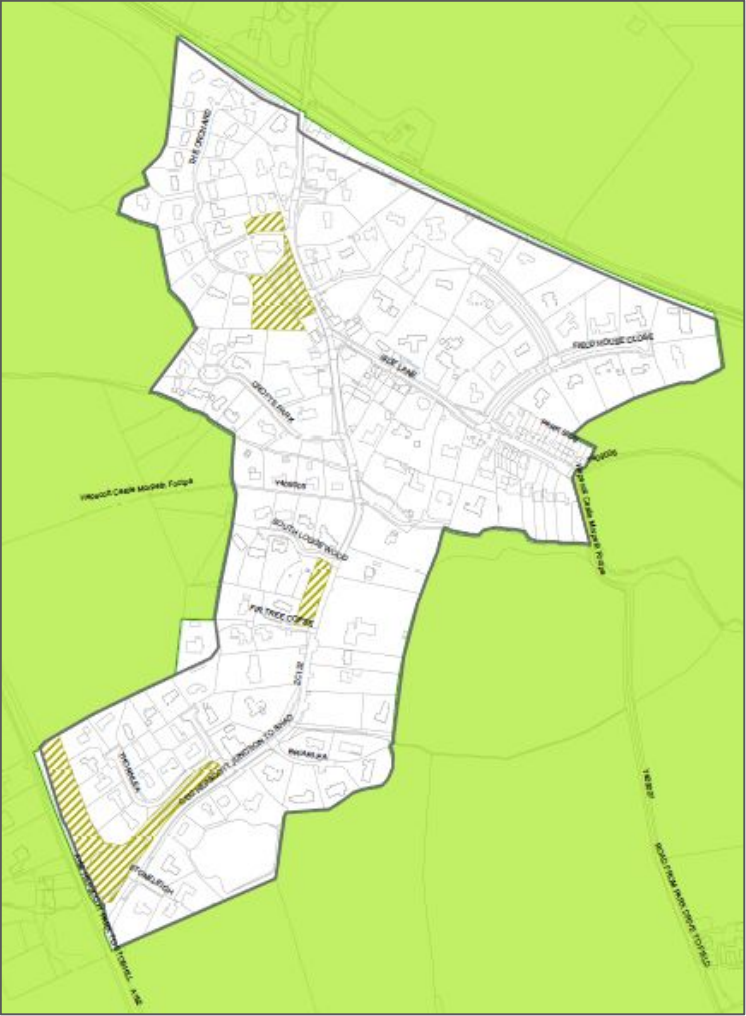




# Smaller Settlements - Hartburn & Hebron

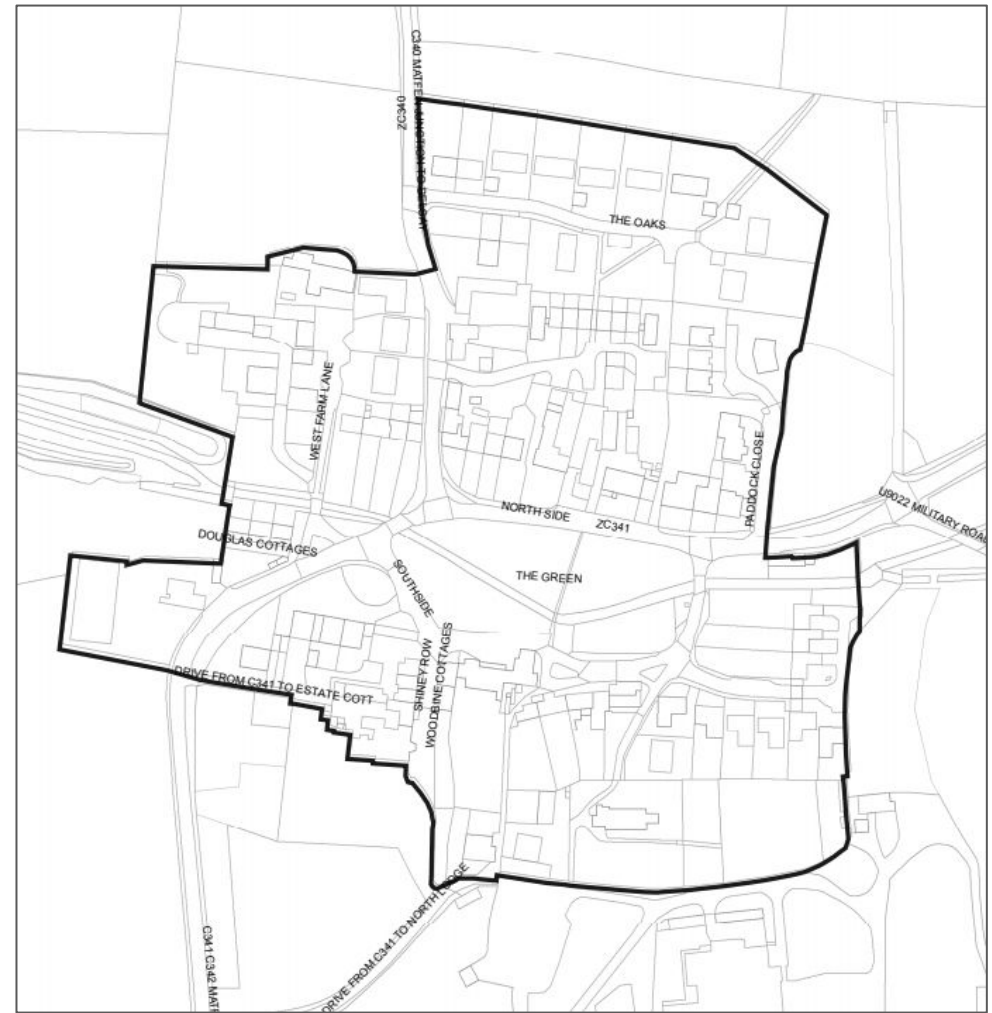
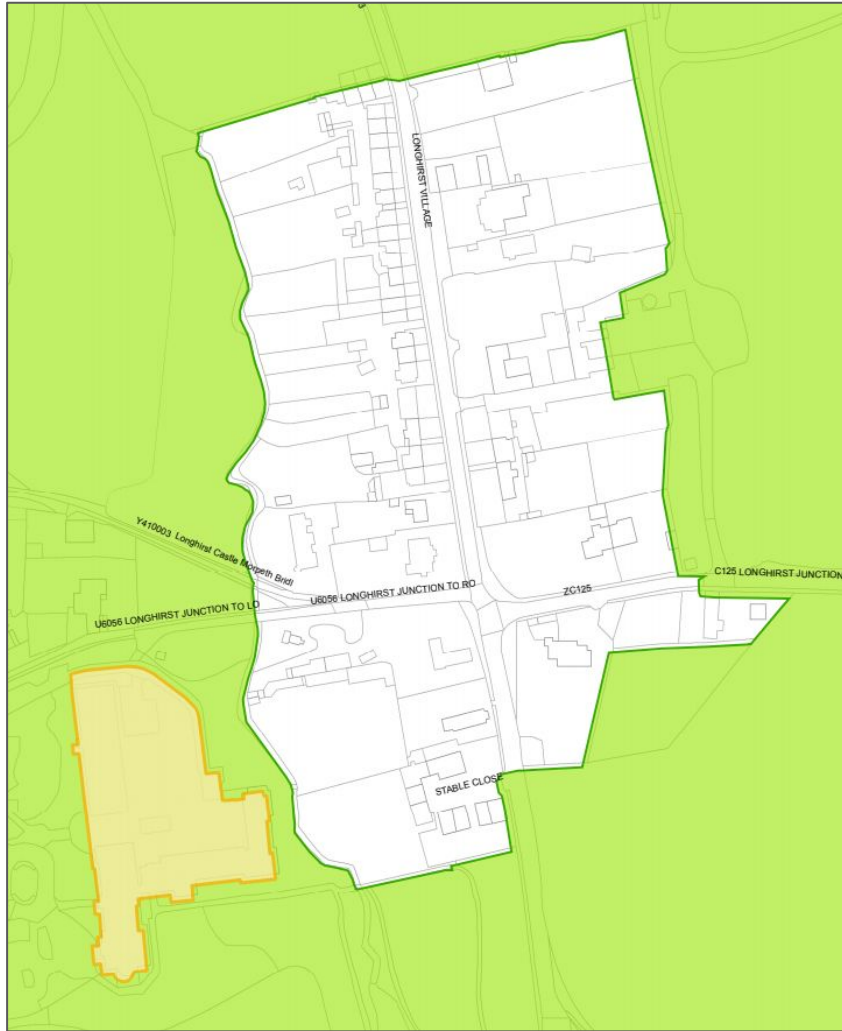


# Smaller Settlements - Hepscott & Ingoe

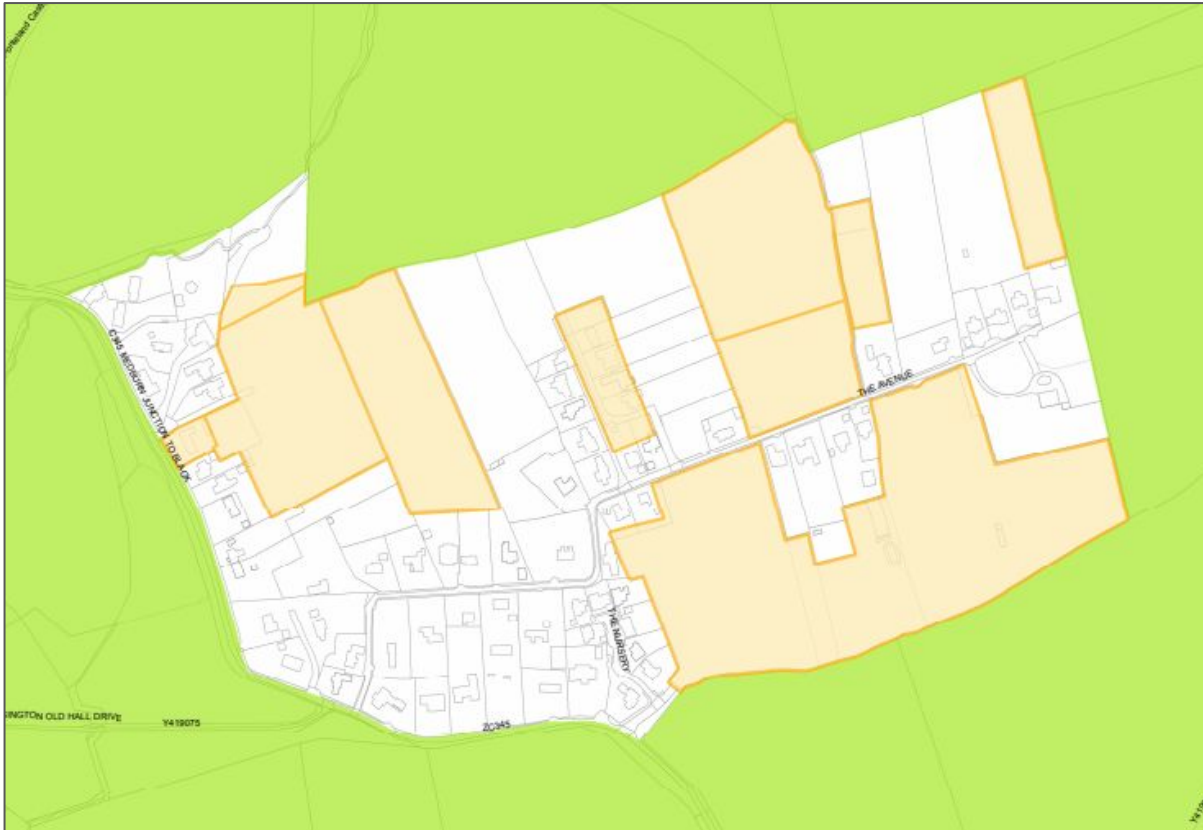




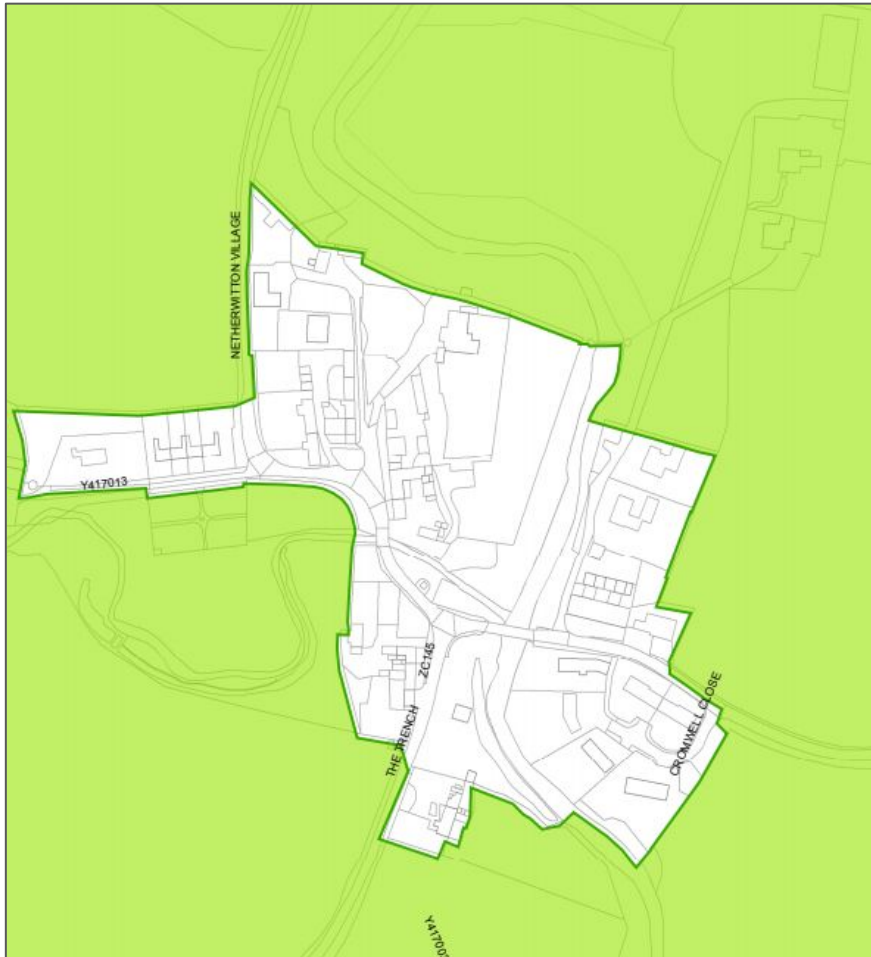
# Smaller Settlements - Longhirst & Matfen



# Smaller Settlements - Medburn & Mitford



# Smaller Settlements - Netherwitton & Ogle



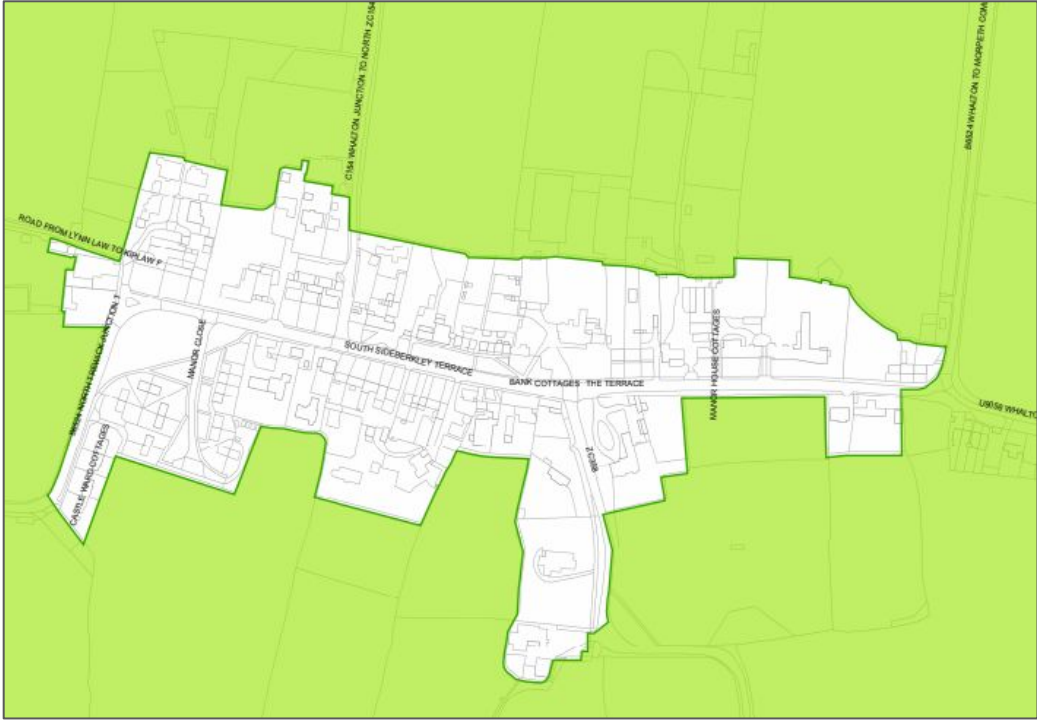
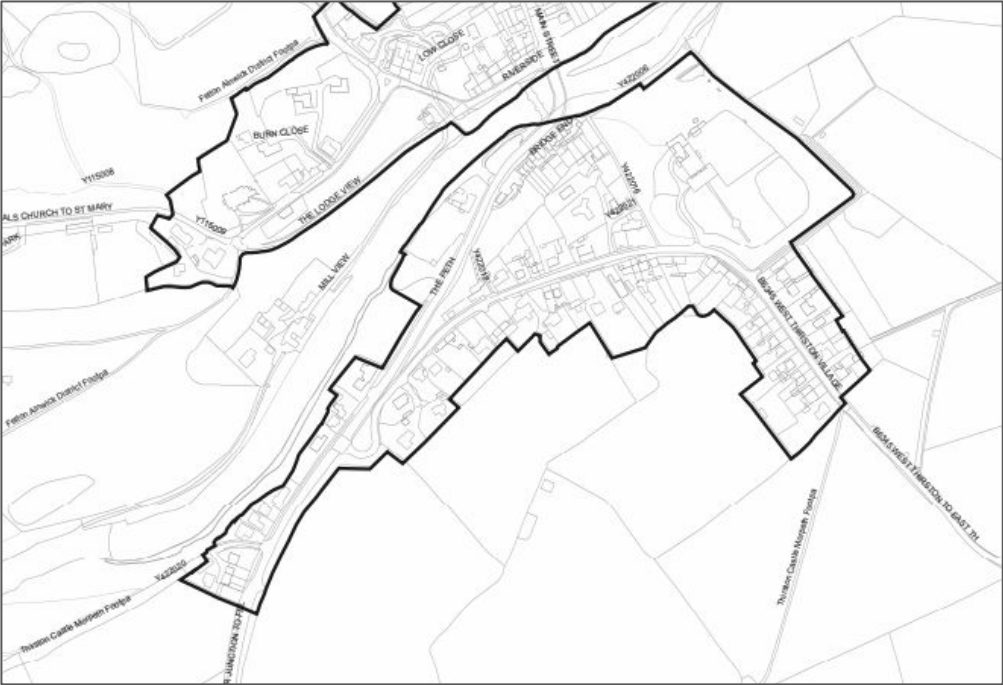
# Smaller Settlements - Scots Gap & Stannington Station



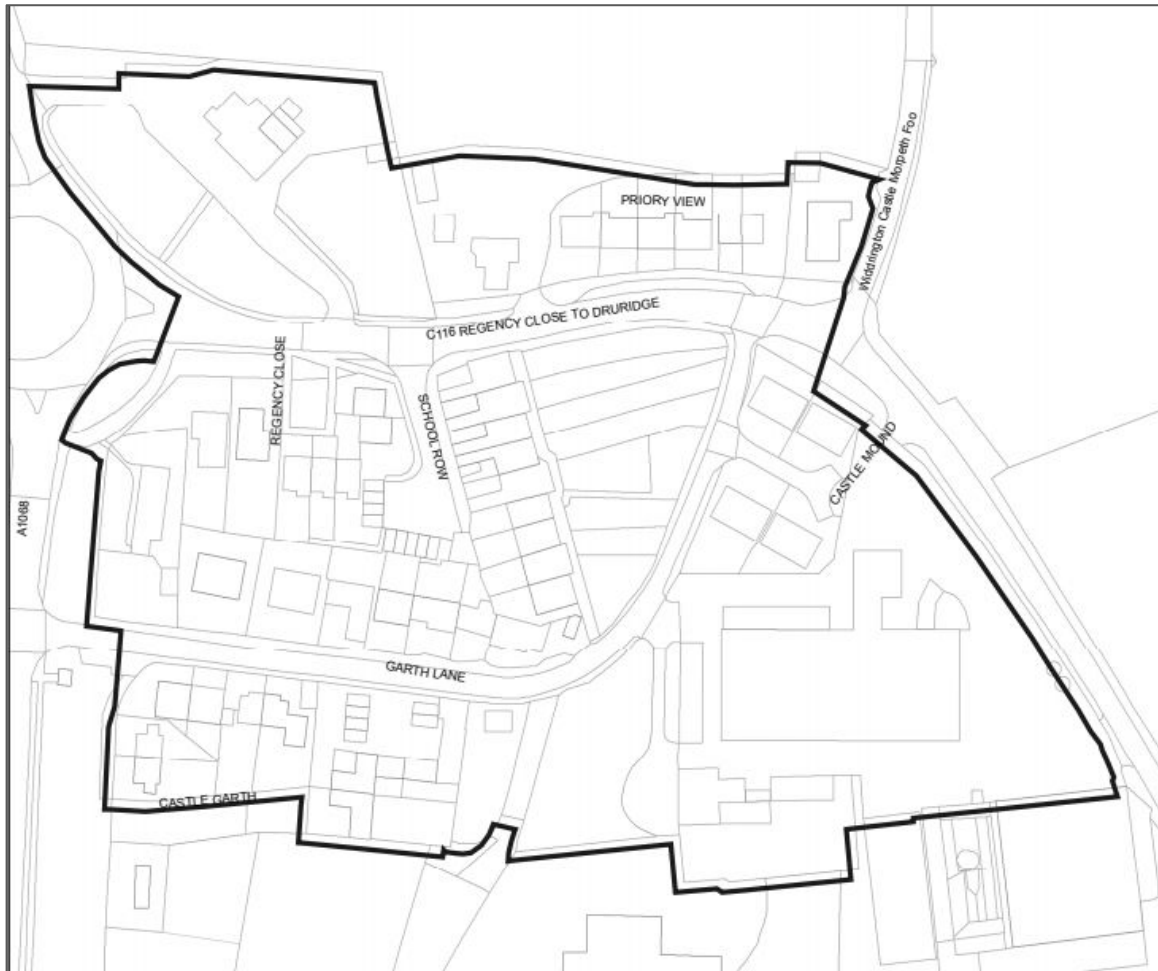




# Smaller Settlements - West Thirston & Whalton



# Smaller Settlements - Widdrington



# Regulation 18 Local Plan Consultation

- Commences 4 July 2018 - runs for 6 weeks ending on 15 August 2018
- 23 Drop-in events
  - Choppington - Social Welfare Centre, Monday 23 July 2-7pm
  - Morpeth - Town Hall, Tuesday 24 July 2-7pm
  - Ponteland - Memorial Hall, Wednesday 25 July 2-7pm
- Responses received will feed into Regulation 19 Local Plan
- Encouraging people to submit responses online
- Policies Map can be accessed via the Local Plan page on the website at:

<http://northumberland.maps.arcgis.com/apps/webappviewer/index.html?id=4bfd486ae75645bf8a286ef5caf44fc5>

- FAQs on the Local Plan page

# Next steps

- Responses feed into Regulation 19 Draft Local Plan, which will be consulted upon in January 2019
- Specific dates on key milestones set out Local Development Scheme:

Key Stages	Date
Regulation 18 - Preparation of Local Plan - Consultation on draft Local Plan	July - August 2018
Regulation 19 - Publication of Local Plan - Consultation on Pre-submission draft (limited to 'Tests of Soundness')	January 2019
Regulation 22 - Submission to Secretary of State	May 2019
Regulation 24 - Independent Examination Hearings	September 2019
Regulation 26 - Adoption of Local Plan	March 2020

# Questions